



**infant
toddler
services
of kansas**

Hope Starts with a Plan

- ▶ **MONICA ROSS, MS, CCC-SLP, MS EDUCATIONAL LEADERSHIP**
- ▶ **INFANT TODDLER SERVICES OF KANSAS SERVING: JOHNSON COUNTY AND LEAVENWORTH COUNTY**



Infant Toddler Services of Kansas

- ▶ Serves children from birth to age 3 to provide early intervention for physical and intellectual disabilities or delays
- ▶ Trained and licensed early intervention professionals visit the child in the home, at childcare, and other environments
- ▶ Coordinated through the state of Kansas
- ▶ No cost to families



Other names you might know Infant Toddler Services of Kansas by:

- ▶ Part C
- ▶ tiny-k
- ▶ Infant Toddler
- ▶ Rainbows
- ▶ TARC
- ▶ Birth-to-Three
- ▶ Arrowhead
- ▶ McKids

Fun Facts about ITS of Kansas



**infant
toddler
services
of kansas**

- ▶ **11,000+ CHILDREN RECEIVE SERVICES EACH YEAR**
- ▶ **400+ LICENSED EARLY INTERVENTION PROFESSIONALS PROVIDING SERVICES**
- ▶ **81% OF CHILDREN EVALUATED ARE ELIGIBLE FOR SERVICES**
- ▶ **36.5% OF CHILDREN RECEIVING SERVICES REACH DEVELOPMENTAL MILESTONES AND DO NOT REQUIRE ADDITIONAL IDEA SERVICES AFTER AGE 3**

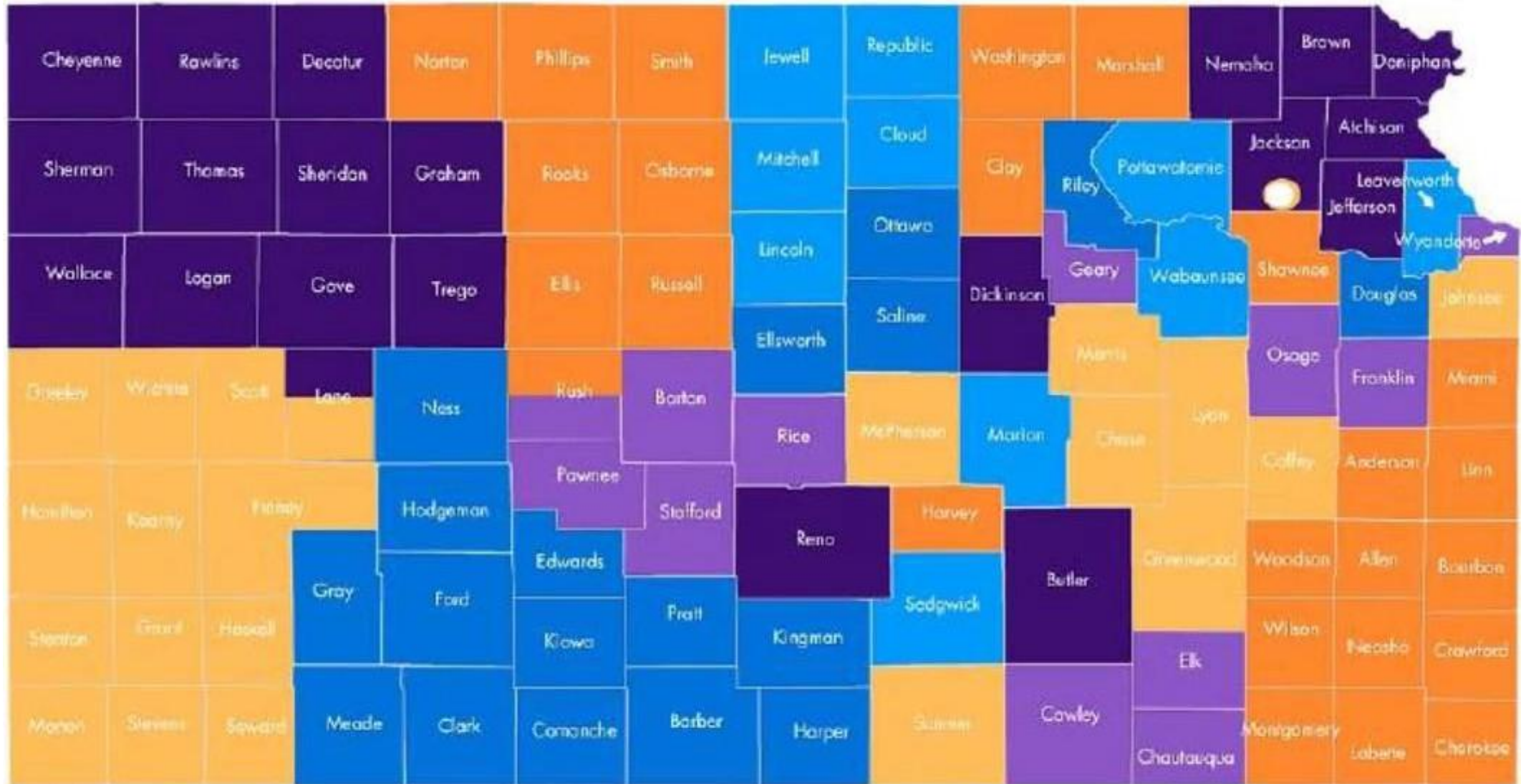


How do I find my local ITS of KS program?

<https://www.itsofks.org/>

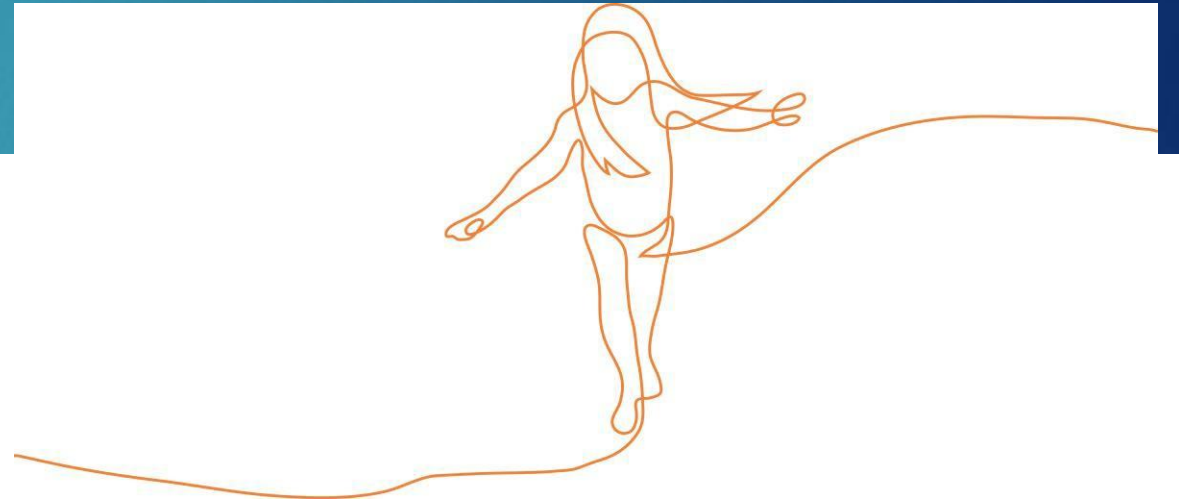
- ▶ 29 programs serving all 105 Kansas counties
- ▶ No matter where a family lives, there is an Infant Toddler Services of Kansas program that covers their area

Click on the county you live in to find your local program.



54% of referrals to Part C come from the medical community.

- ▶ **Medical** - pediatricians, family practice, hospitals, NICUs, private therapy clinics
- ▶ **Parents** – self referrals
- ▶ **Community organizations** – DCF, WIC, Parents as Teachers,
- ▶ **Early childhood educators** – childcare centers, in-home childcare providers





Step-by-Step

Referral
Intake
Evaluation
IFSP
Early Intervention Services
IFSP Review
Transition

What does an evaluation include?

- ▶ **Areas evaluated:** fine & gross motor skills, adaptive skills, cognitive skills, social communication, social emotional development.
- ▶ **Location:** family's home, childcare or community setting.
- ▶ **Information:** parent report, observation, direct interaction, routines-based interview
- ▶ **Length of time:** approximately 90 minutes.
- ▶ **Eligibility:** A multidisciplinary team must give input into the final decision.



How does a child qualify for services?

1. Developmental Delay:

- a 25% delay in one area of development or
- a 20% delay in two or more areas of development

2. Automatically eligible:
Medical diagnosis that may impact development

3. Informed clinical opinion



**Auto-eligible
diagnosis
include but not
limited to...**



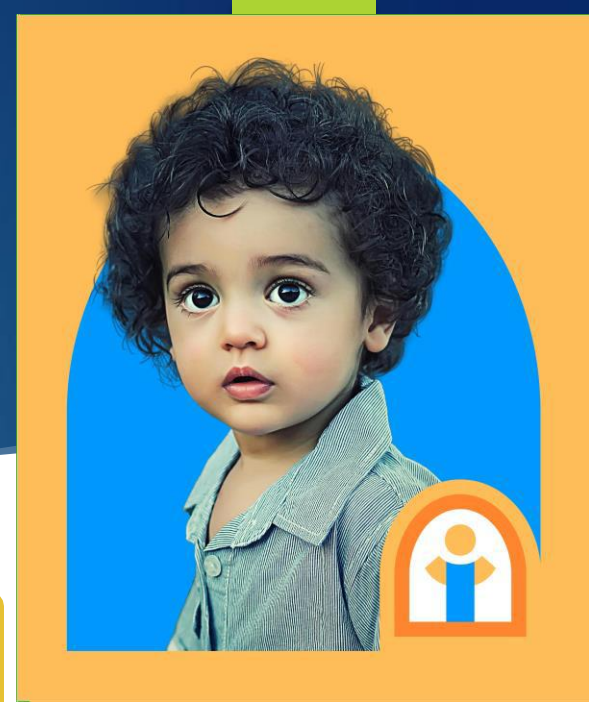
- ▶ **FRAGILE X**
- ▶ **DOWN SYNDROME**
- ▶ **PEDIATRIC HIV/AIDS**
- ▶ **AUTISM SPECTRUM DISORDER**
- ▶ **RHETT SYNDROME**
- ▶ **PERMANENT HEARING LOSS-UNILATERAL OR BILATERAL**
- ▶ **VISUAL IMPAIRMENT THAT IS NOT CORRECTABLE WITH TREATMENT, SURGERY, GLASSES OR CONTACT LENSES**
- ▶ **CEREBRAL PALSY**
- ▶ **EPILEPSY**
- ▶ **HYDROCEPHALY**
- ▶ **MICROCEPHALY AND MACROCEPHALY**
- ▶ **PREMATURITY**

Key Principles of Early Intervention:

- ▶ Infants and toddlers learn best through everyday experiences with familiar people in familiar contexts
- ▶ All families can enhance their child's learning and development
- ▶ Our primary role is to work with and support family member's and caregivers in the children's lives
- ▶ The early intervention process must reflect the child and family's preferences and learning styles
- ▶ IFSP outcomes must be functional and based on children and family priorities



An Individualized Family Service Plan is created.



Created with the family

Includes family priorities, outcomes, and services

Service frequency and location are included

Reviewed at least every 6 months

How many different services are provided under Part C of IDEA?



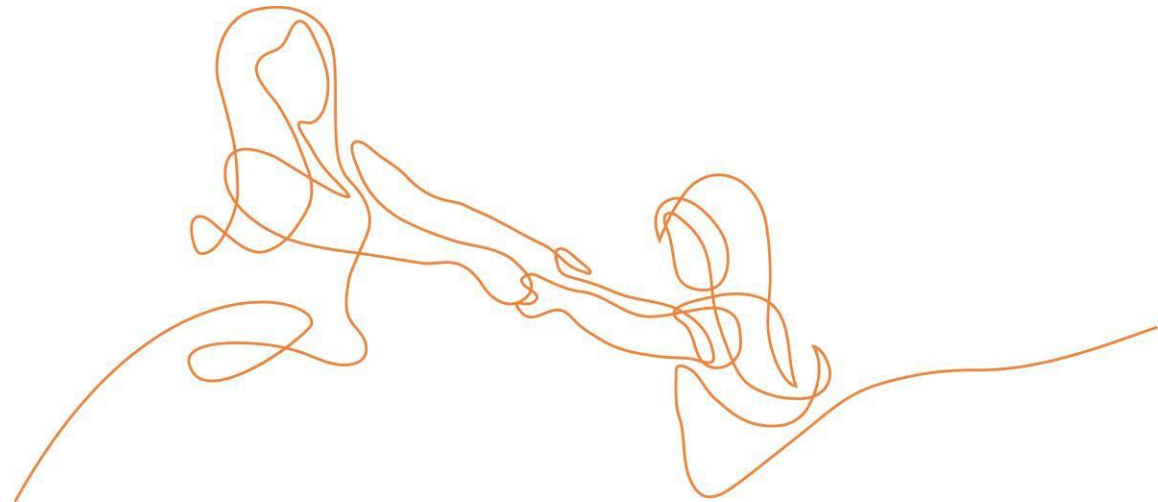


An early intervention visit includes:

- ▶ REVIEW THE PREVIOUS PLAN – WHAT HAS HAPPENED SINCE THE LAST VISIT
- ▶ PRACTICE THE ACTIVITY/ROUTINE – OBSERVE, MODEL, ENCOURAGE THE FAMILY TO PRACTICE, REFLECT, PRACTICE
- ▶ CREATE A NEW PLAN FOR THE FAMILY TO PRACTICE BETWEEN SESSIONS
- ▶ SCHEDULE NEXT VISIT

What does transition from Infant Toddler Services of Kansas look like?

- ▶ A child could exit from Infant Toddler Services with no delay in development – 36.5% do!
- ▶ Referral to a local school district's early childhood program for evaluation and eligibility determination after age 3
- ▶ Head Start program
- ▶ Private preschool or parent day out programs
- ▶ Private therapy or developmental clinics
- ▶ Anything the family chooses we will support through referrals and collaboration





Part C is a voluntary program for of parents.

- ▶ Parents choose whether their child receives early intervention services.
- ▶ Parents can also opt out of a particular service and still receive other early intervention services.

Resources

- ▶ Greenbush, (2024). *Fast facts for building administrators: IDEA part C*. Greenbush. <https://www.greenbush.org/wp-content/uploads/2024/02/Fast-Facts-for-Building-Admin-IDEA-Part-C-B.pdf>
- ▶ Kansas Department of Health and Environment. (n.d.). *Kansas IDEA Part C procedure manual*. Kansas Department of Health and Environment. <https://www.kdhe.ks.gov/DocumentCenter/View/5911/Kansas-IDEA-Part-C-Procedure-Manual---Whole-Document-PDF>
- ▶ National Center for Hearing Assessment and Management. (n.d.). *Aspect of IDEA Part C and IDEA Part B*. National Center for Hearing Assessment and Management. <https://www.infanthearing.org/earlyintervention/docs/aspect-idea-part-c-and-idea-part-b.pdf>
- ▶ Kansas Infant-Toddler Services (Part C) Needs Assessment. 2019. [Kansas Infant-Toddler Services \(Part C\) Needs Assessment](#)

Questions?

- ▶ Monica Ross, Program Director monica.ross@itsjc.org
- ▶ Website: www.itsofks.org

